



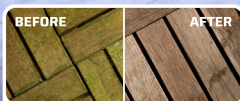
STORM

PRO 5

DRIVEWAYS | FENCES | WALLS

PATIO FORCE

CONCENTRATE



✓ **DECKING**



✓ **DRIVEWAYS**



✓ **CONSERVATORIES**

KILLS AND CONTROLS GREEN GROWTH, ALGAE AND LICHENS

Storm Pro-Formula concentrate kills and controls green growth, algae, mould and lichens on a multitude of surfaces including patios, walls, roof tiles, monuments, caravans, green houses, driveways, decking, conservatories, artificial grass, garden furniture, fence panels, prior to painting & staining surfaces for up to 9 months.

5 Litres



KILLS AND CONTROLS GREEN GROWTH, ALGAE & LICHENS

ROOF TILES | DECKING | PAVING | CONSERVATORIES

WHERE TO USE PATIO FORCE

To remove green growth on - outdoor paved areas, patios, walls, roof tiles, monuments, caravans, green houses, driveways, decking, conservatories, artificial grass, garden furniture, fence panels. Ideal for removing green growth prior to painting, staining or sealing.

✓ **LONG LASTING PROTECTION**

✓ **EASY-TO-USE**

✓ **NON-STAINING**

CHOOSE PATIO FORCE FOR YOUR GARDEN & HOME

Patio Force is the easy way to kill and control all types of green growth including algae, lichen and mould on all types of hard surfaces. No need for pressure washing, scrubbing or washing off. Contains biodegradable ingredients and does not contain any bleach or acid.



Scan to find out more information on our website

HOW TO USE PATIO FORCE

1. DO NOT APPLY if rain is expected within 12 hours
2. DO NOT APPLY if the temperature is below 5°C
3. Remove leaves, moss, litter and other debris from the affected area
4. Remove any large mould or algae growth with a stiff brush
5. Dilute PATIO FORCE using the recommended dilution guide

DILUTION GUIDE

	PATIO FORCE	Water	Area
Normal Coverage	300ml	1 Litre	3.3m ²
Light Coverage	150ml	1 Litre	6.6m ²

6. Apply to a dry surface for best results. Application method: TRIGGER SPRAY, SPRAY, WATERING CAN, BATTERY OPERATED SPRAYER, LANCE SPRAYER
7. Ensure PATIO FORCE is mixed well before use
8. Store container in an upright position when not in use

✓ **CLEANS UP TO 220sqm**

✓ **UP TO 9 MONTHS PROTECTION**

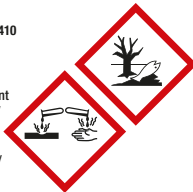
✓ **NO SCRUBBING REQUIRED**

Mix the product in a watering can or container using the recommended dilution rates. Cover the whole of the area being treated and leave to dry. Within a week the product will start working. In case of heavily areas repeat the treatment as required.

PRECAUTIONS: WASH HANDS AND EXPOSED SKIN before meals and after use. • KEEP IN A SAFE PLACE. • DO NOT CONTAMINATE FOODSTUFFS, EATING UTENSILS OR FOOD CONTACT SURFACES. • This material and its container must be disposed of in a safe way. • KEEP AWAY FROM TREATED SURFACES UNTIL DRY. Keep out of the reach of children. Wear suitable protective clothing and gloves. Keep in original containers, tightly closed, in a safe place. Ensure adequate ventilation when applying. To avoid risks to man and the environment, comply with the instructions for use.

STATUTORY CONDITIONS OF APPROVAL RELATING TO USE: FOR AMATEUR USE ONLY AS SURFACE BIOCIDES DILUTE THE PRODUCT FROM 30% TO 15%, DEPENDING ON THE INFESTATION. 1 LITRE PER 3 SQUARE METERS FOR NORMAL INFESTATION. 1 LITRE PER 6.66 SQUARE METERS FOR LIGHT INFESTATION. Users must comply in full with all their legal responsibilities under the Control of Pesticides Regulations 1986 (as amended), including complying with all Conditions of Approval. READ ALL PRECAUTIONS BEFORE USE. HSE No 10567

STORM PRO 5 Alkyl(C12-16) dimethylbenzyl ammonium chloride 4.99% w/w
DANGER. H315 Causes skin irritation. H318 Causes serious eye damage. H410 Very toxic to aquatic life with long lasting effects. P280 Wear protective gloves/protective clothing/eye protection/face protection. P302+P352 IF ON SKIN: Wash with plenty of water/... P305+P351+P338 IF IN EYES: Rinse cautiously with water for several minutes. Remove contact lenses, if present and easy to do. Continue rinsing. P310 Immediately call a POISON CENTER/ doctor/... P321 Specific treatment (see ... On this label). P332+P313 If skin irritation occurs: Get medical advice/attention. P362+P364 Take off contaminated clothing and wash it before reuse. P501 Dispose of contents/ container in accordance with applicable regulations.



Manufactured in the U.K.
Marketed by Lodi UK Limited.
3rd Avenue, Pensnett Trading Estate,
Kingswinford, West Midlands DY6 7FD
Tel: +44(0)1384 404242
sales@lodi-uk.com www.lodi-uk.com

5 Litres
UFI- 3474-G0M1-V00X-26X2